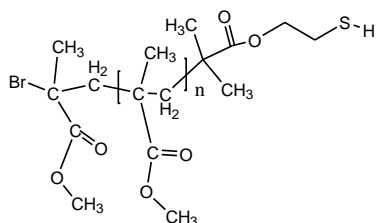


Sample Name:
Thiol-Terminated Poly(Methyl Methacrylate)

Sample #: P20165-MMASH

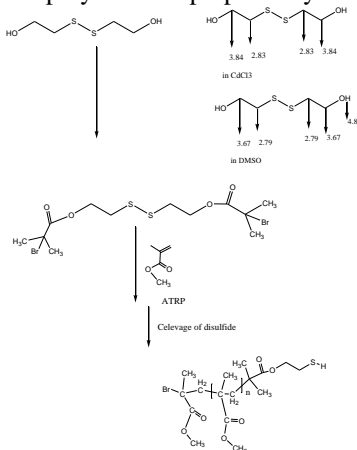
Structure:



Composition:

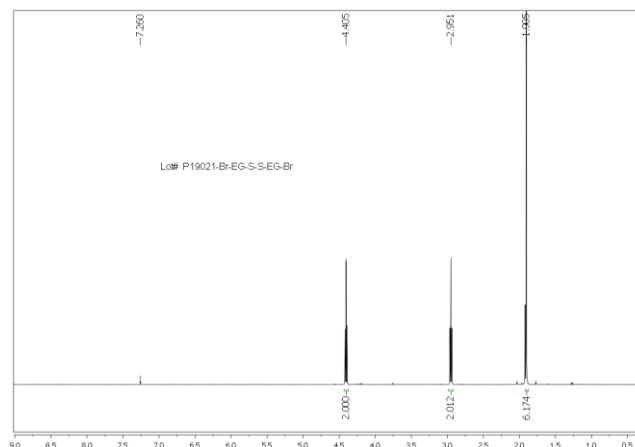
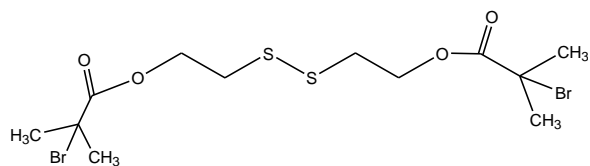
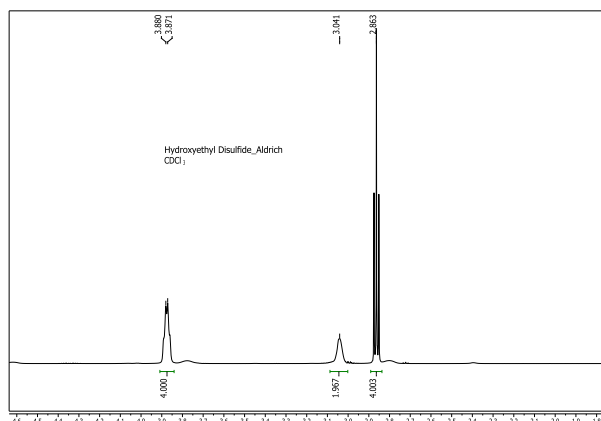
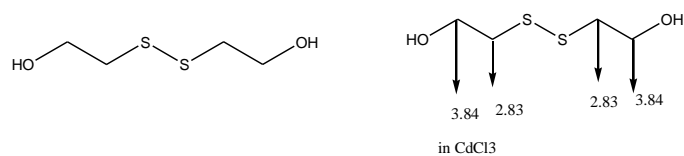
Mn x 10 ³	PDI
3.0	1.5
Syndio:hetero:iso ratio	55:40:5
SH functionality	>50%

Synthesis: The polymer was prepared by ATRP process.

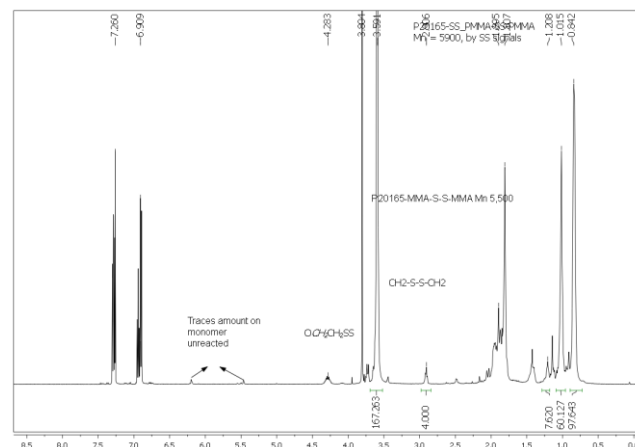


Characterization: The polymer was characterized by size exclusion chromatography (SEC) and ¹H NMR spectroscopy.

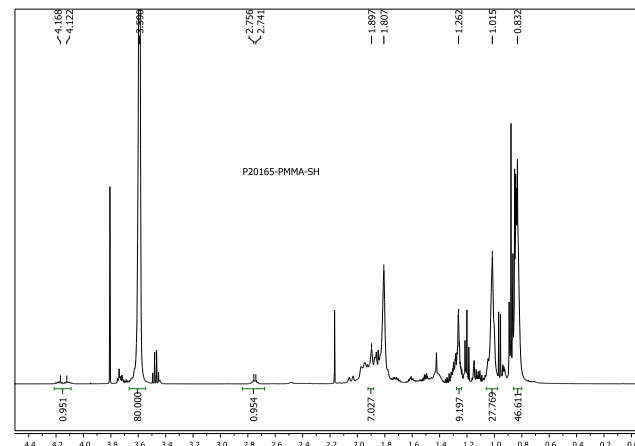
¹H NMR spectra:



MMA-SS-MMA

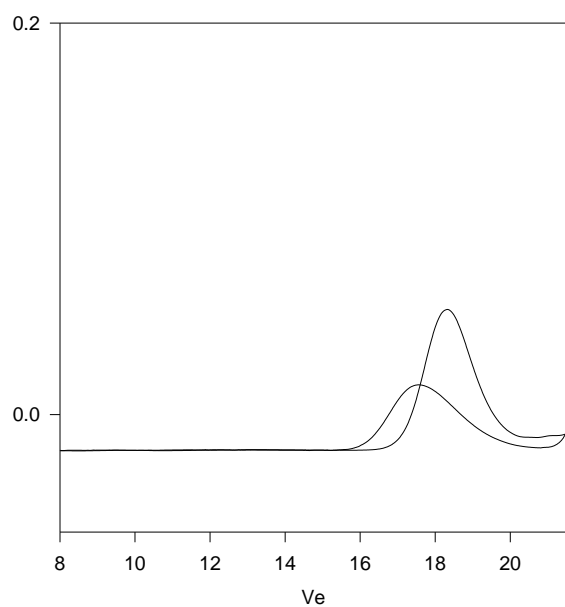


MMA-SH



SEC elugram:

P20165-MMASH



Size Exclusion Chromatography of Thiol end Poly(methyl methacrylate):

1. Disulfide stage: $M_n = 6,000$, $M_w = 8,400$ $M_w/M_n = 1.4$

2. After Cleavage of disulfide link:

M_n 3,000, M_w : 4,500 M_w/M_n 1.5

SH Functionality >50%