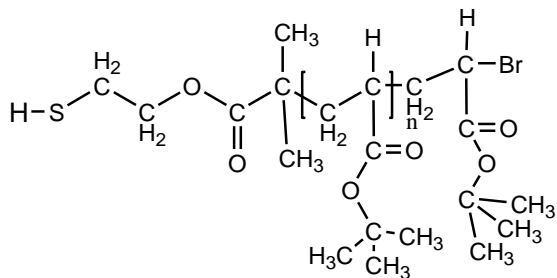
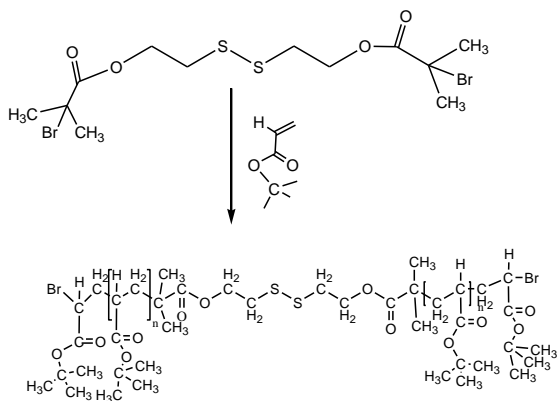
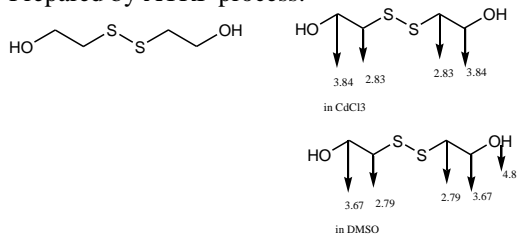


Sample Name:**Thiol terminated Poly(tert. disulfide linkage****Sample #: P20166-tBuA2SS****Structure:****Composition:**

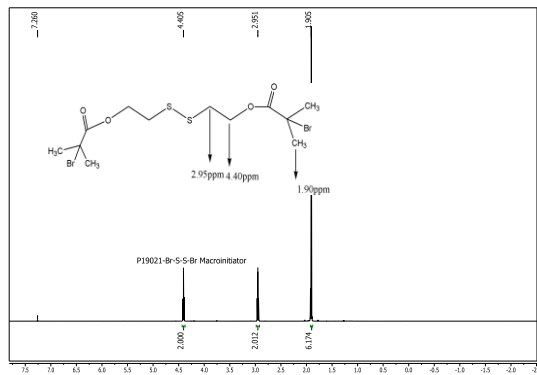
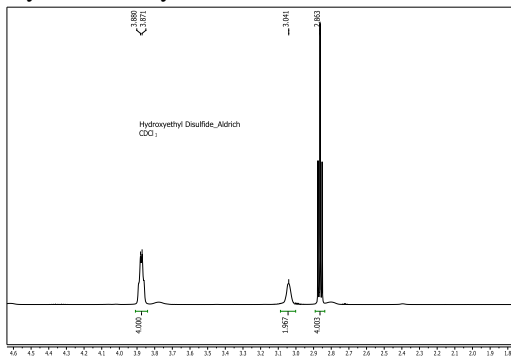
$M_w \times 10^3$	PDI
8.0	1.3

Synthesis Procedure:

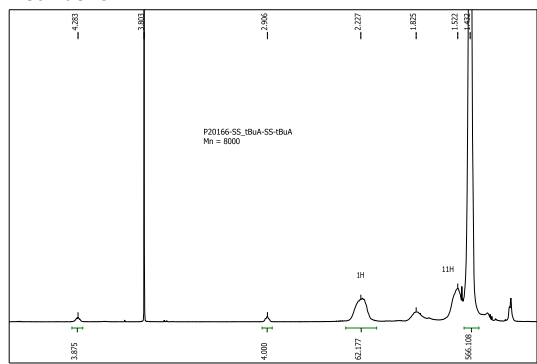
Prepared by ATRP process:

**Characterization:**

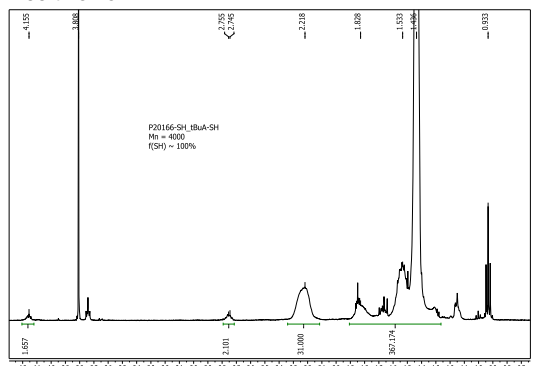
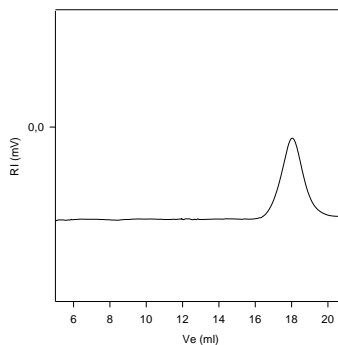
By SEC and by HNMR



Disulfide form :



Free thiol form

**SEC of Sample:****P20166-tBuA2SS**

Size Exclusion Chromatography of the Product:

 $M_n = 8,000$, $M_w = 10,500$, $M_w/M_n = 1.3$