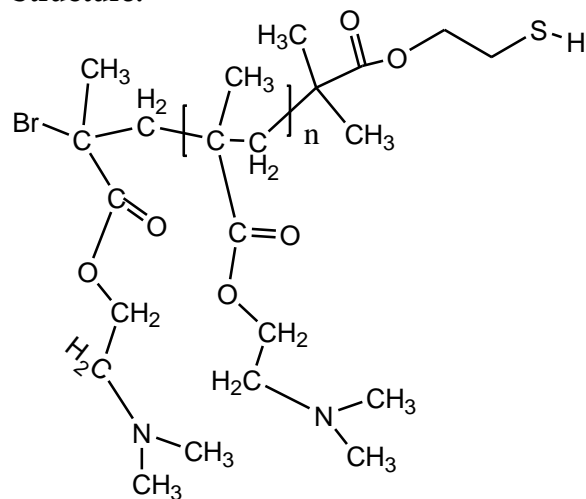
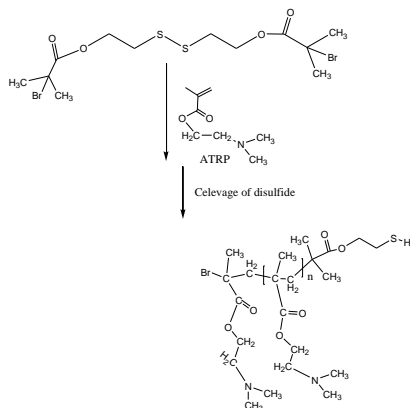
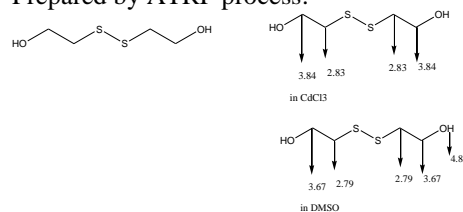


**Sample Name:****Thiol Terminated Poly(2-(Dimethylamino)ethyl methacrylate)****Sample #: P20168-DMAEMA-SH****Structure:****Composition:**

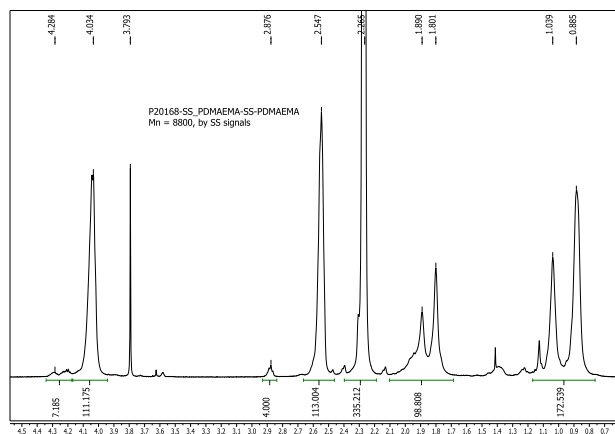
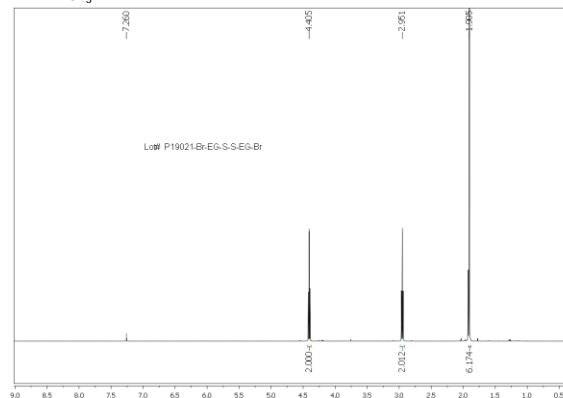
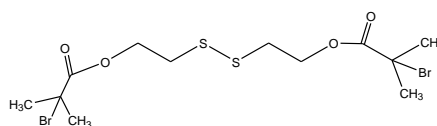
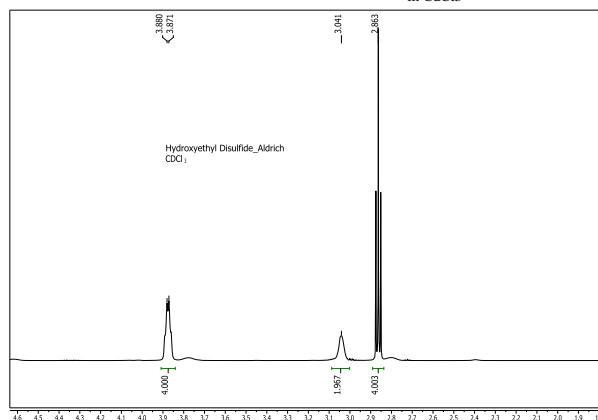
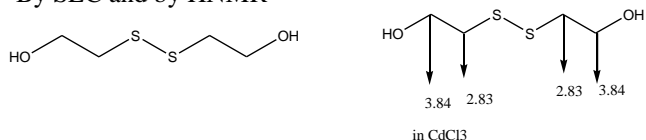
Mn x 10 <sup>3</sup>	PDI
4.0	1.45
Syndio:hetero:iso ratio	55:40:5
SH functionality	>90%

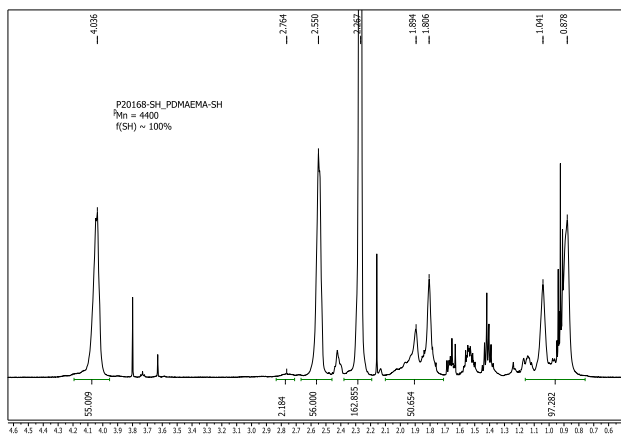
**Synthesis Procedure:**

Prepared by ATRP process:

**Characterization:**

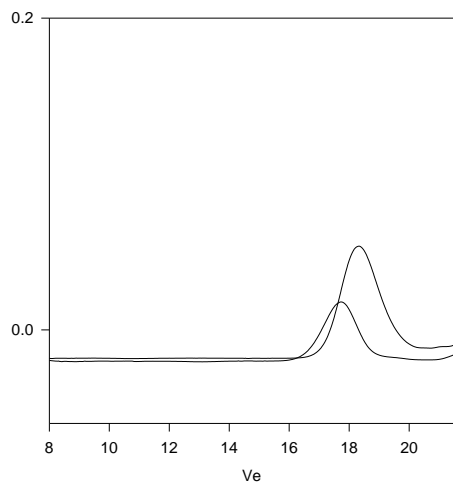
By SEC and by HNMR





## SEC of Sample:

### **P20168-DMAEMA-SH**



Size Exclusion Chromatography of Thiol end Poly(NN-Dimethyl amino ethyl methacrylate):

1. Disulfide stage:  $M_n = 8,500$ ,  $M_w = 11,000$   $M_w/M_n = 1.3$
2. After Cleavage of disulfide link:  
 $M_n$  4,000,  $M_w$ : 5,500  $M_w/M_n$  1.45  
 SH Functionality >90%