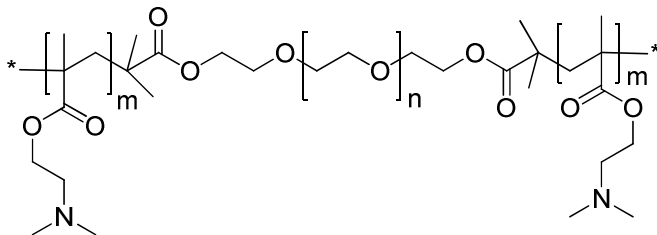


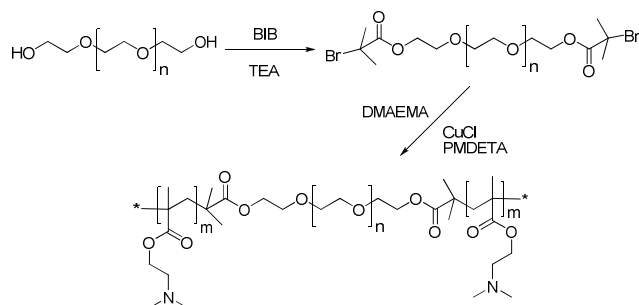
Sample Name:

Poly[(2-dimethylaminoethyl) methacrylate-b-ethylene oxide-b-(2-dimethylaminoethyl) methacrylate]

Sample ID: P20235B-DMAEMAEODMAEMA

Structure:**Composition:**

$M_n \times 10^3$	PDI
DMAEMA-b-EO-b-DMAEMA	
2.5-b-1.0-b-2.5	1.33

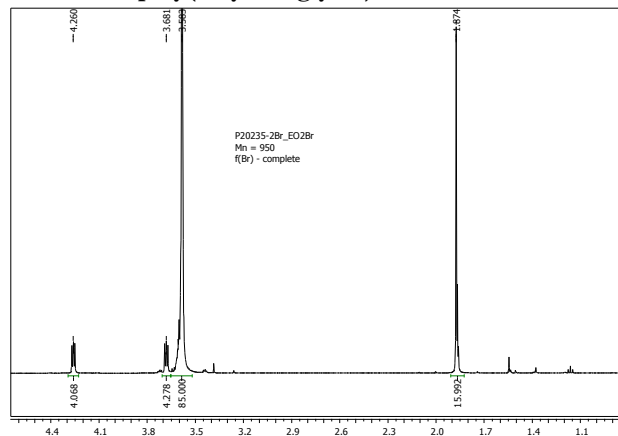
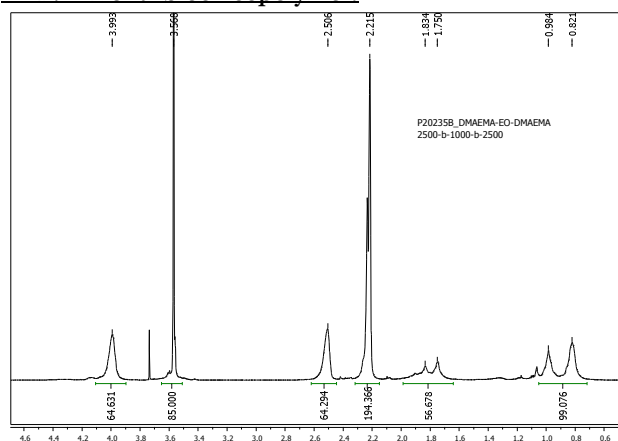
Synthetic Procedure:**Characterization:**

The molecular weight characterization was performed by ^1H NMR and size exclusion chromatography (SEC) using refractive index and light-scattering detectors.

Composition: Composition of the triblock copolymer was determined by ^1H NMR.

Solubility:

Polymer is soluble in acetone, THF, CHCl_3 . It was precipitated from hexane / ether.

 ^1H NMR of poly(ethylene glycol) dibromide: **^1H NMR of triblock copolymer:****SEC of Sample:**

SAMPLE ID: P20235B-DMAEMAEODMAEMA

Conc (mg/ml)	60.9823
dn/dc (dl/g)	0.0590
Method	ps80k-July2015-0000.vcm
Solvent	DMF w 0.03M LiBr
System	System 1

