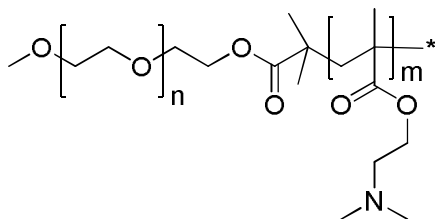


Sample Name:

Poly[ethylene oxide-b-(2-dimethylaminoethyl) methacrylate]

Sample #: **P20283A-EODMAEMA**

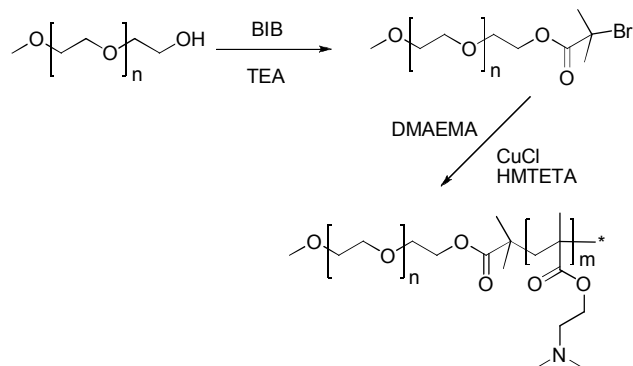
Structure:



Composition:

$M_n \times 10^3$ EO-b-DMAEMA	PDI
1.9-b-3.7	1.25

Synthetic Procedure:



Characterization:

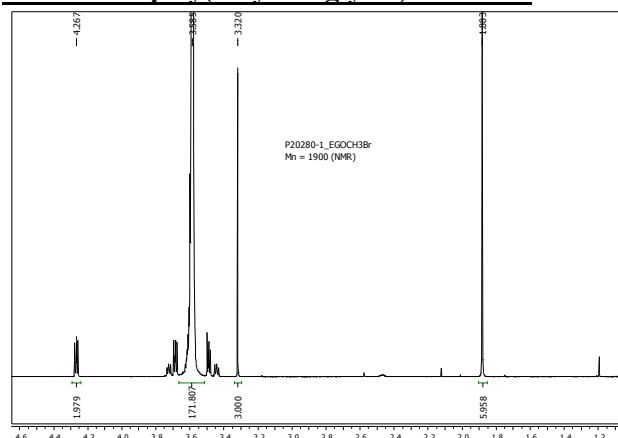
The molecular weight characterization was performed by ^1H NMR and size exclusion chromatography (SEC) using refractive index and light-scattering detectors.

Composition: Composition of the diblock copolymer was determined by ^1H NMR.

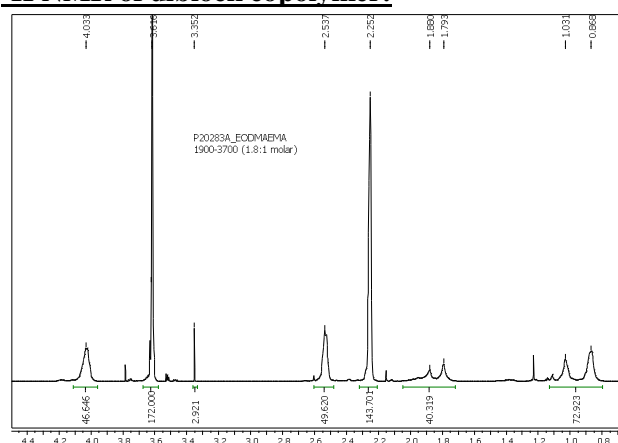
Solubility:

Polymer is soluble in acetone, THF, CHCl_3 and water. It was precipitated from hexane.

^1H NMR of poly(ethylene glycol) bromide:

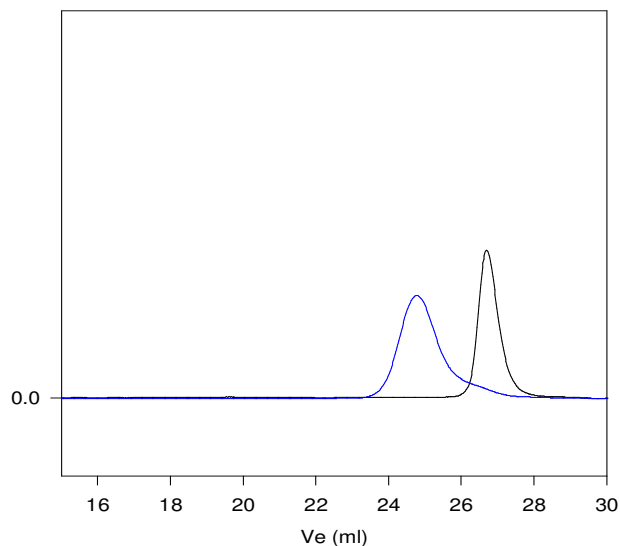


^1H NMR of diblock copolymer:



SEC elugram:

P20283A-EODMAEMA



Size exclusion chromatography of the product

— PEO, $M_n=1,900$, $M_w=2,000$, $M_w/M_n=1.05$

— Poly(ethylene oxide-b-N,N-dimethylaminoethylmethacrylate)

Mn: PEO(1,900)-b-DMAEMA(3,700) $M_w/M_n=1.25$

(v.K-01)