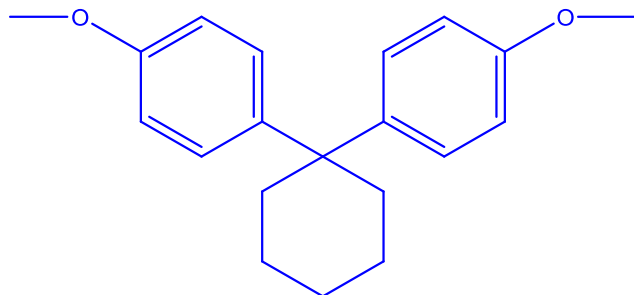


Sample Name:**1,1-Bis(4-methoxyphenyl)cyclohexane****Sample #: OR403-BMCyH****Structure:****Composition:**

MW	Purity
296.40	Over 98%
T _g (°C)	-27

Synthesis Procedure:

The product was prepared from 4, 4'-cyclohexylidenebisphenol etherification according to available literature.

Characterization:

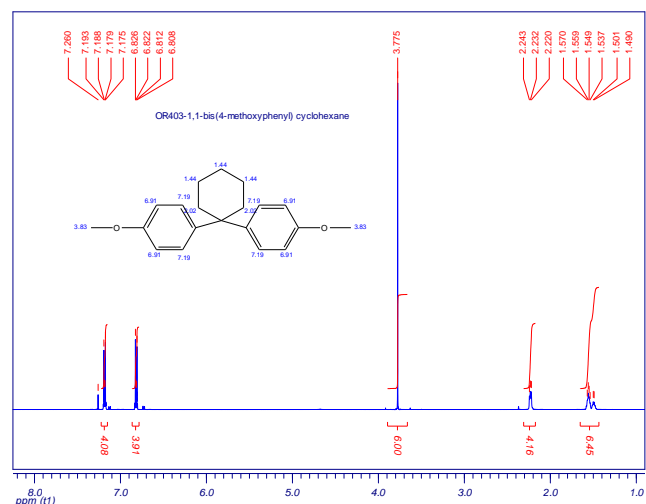
The proton NMR was recorded in deuterated chloroform.

Thermal analysis

Thermal analysis of the samples was carried out on a TA Q100 differential scanning calorimeter at a heating rate of 10°C/min. The midpoint of the slope change of the heat flow plot of the second heating scan was considered as the glass transition temperature (T_g).

Solubility:

The product is soluble in chloroform, benzene, toluene, acetone and THF. It is insoluble in water and has limited solubility in methanol.

NMR of the sample:**DSC thermogram for the monomer:**