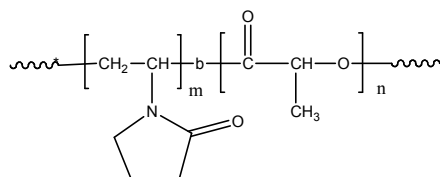


Sample Name:

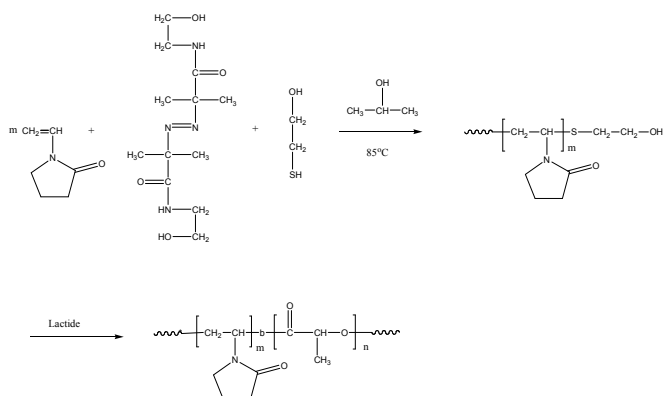
Poly(N-vinylpyrrolidone -b- lactide) (DL form)

Sample #: P4897-NVPLA (DL form)**Structure:****Composition:**

Mn x 10 ³ PVP-b-PLA	PDI
1.9-b-1.5	1.6

Synthesis Procedure:

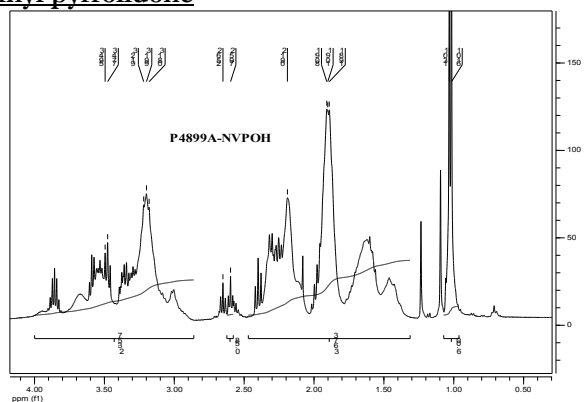
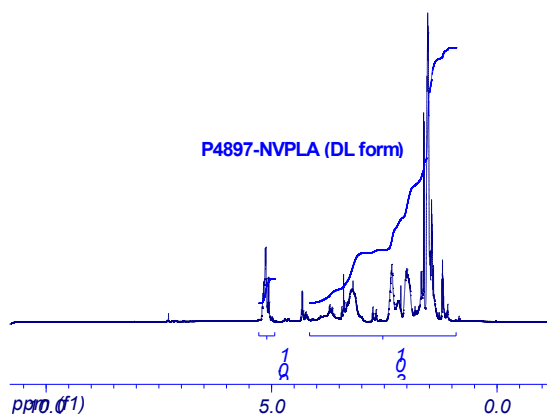
Poly(N-vinylpyrrolidone -b- lactide) is prepared by radical polymerization of N-vinylpyrrolidinone at the presence of chain transfer agent, followed by anionic polymerization of lactide with the catalyst. The scheme of the reaction is illustrated below:

**Characterization:**

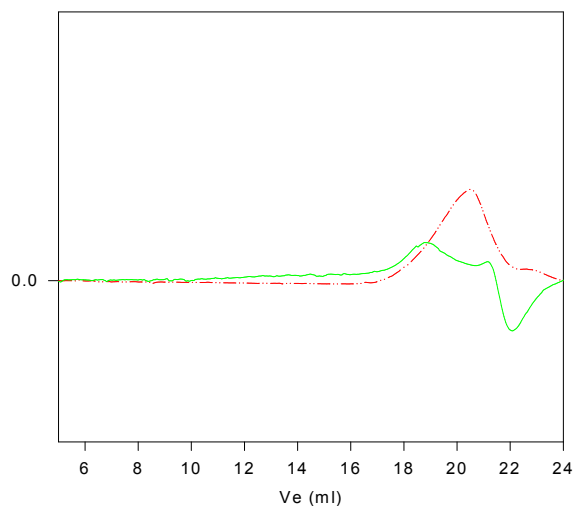
An aliquot of the hydroxyl ended poly(N-vinylpyrrolidone) block was terminated before addition of lactide and analyzed by size exclusion chromatography (SEC) to obtain the molecular weight and polydispersity index (PDI). The final block copolymer composition was calculated from ¹H-NMR spectroscopy by comparing the peak area of the methane of lactide at about 5.1 ppm with the poly(N-vinylpyrrolidone) protons at about 1.0-4.5 ppm deducted the methyl contribution of lactide.

Solubility:

Poly(N-vinylpyrrolidone -b- lactide) is soluble in chloroform, THF, DMF, toluene and precipitates from ethanol, ether and hexane.

¹H-NMR Spectrum of the OH terminated Poly N-vinyl pyrrolidone**¹H-NMR Spectrum of the block copolymer****SEC of the block copolymer:**

P4897-NVPOH



Size exclusion chromatography in DMF at 40 °C:
Eluent containing 0.01 M LiBr

--- Hydroxyl ended poly(N-vinylpyrrolidone),
M_n=1900, M_w=3000, PI=1.6. (Mn obtained by NMR)
— Poly(N-vinylpyrrolidone)-b-Poly lactide,
M_n=1900-b-1500 PI=1.6. (compositions obtained by NM

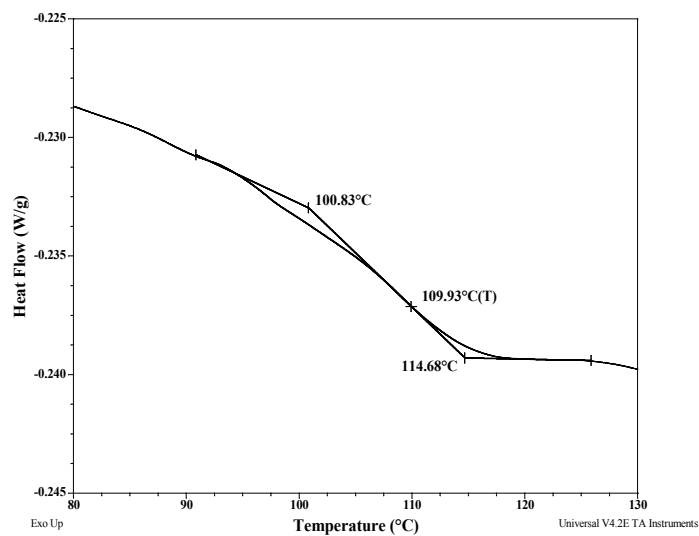
Thermal analysis of the sample# P4897-NVPLA

Thermal analysis of the samples was carried out on a TA Q100 differential scanning calorimeter at a heating rate of 10°C/min. The midpoint of the slope change of the heat flow plot of the second heating scan was considered as the glass transition temperature (T_g).

Thermal analysis results at a glance:

NV block	PLA block (DL form)
$T_g = 110^{\circ}\text{C}$	$T_g = 11^{\circ}\text{C}$

Thermogram for the NV block



Thermogram for the PLA block

