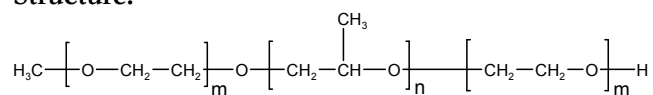


**Sample Name:**

**Poly(ethylene oxide-b- propylene oxide -b- ethylene oxide)**

**Sample #: P10483-EOPOEO**

**Structure:**



**Composition:**

Mn x 10 <sup>3</sup>	PDI
0.28-b-1.3-b-0.7	1.09
Dp: 6-b-23-b-16	

**Synthesis Procedure:**

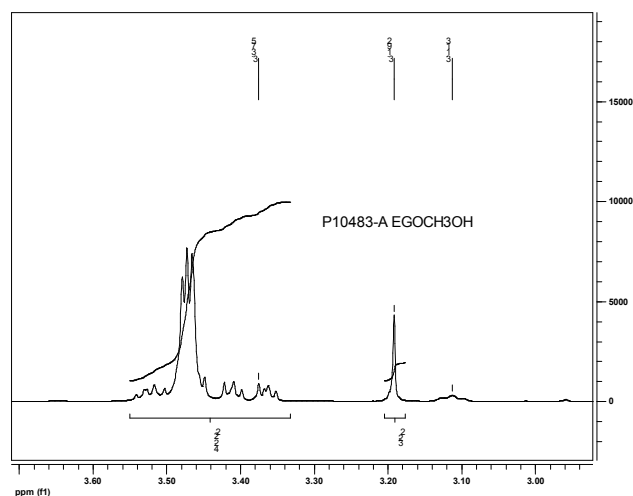
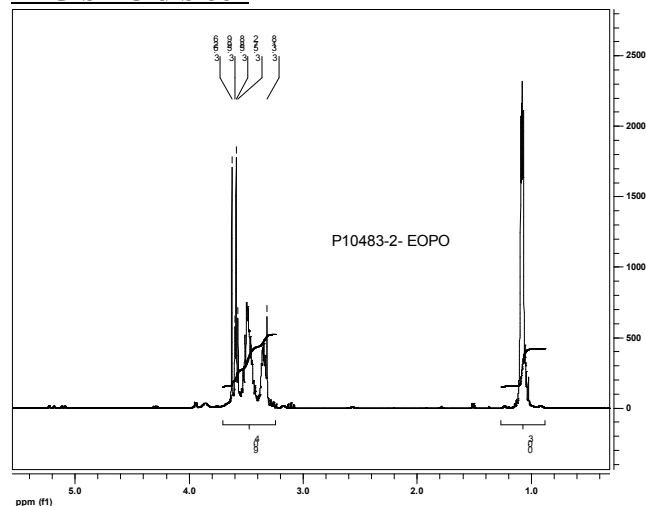
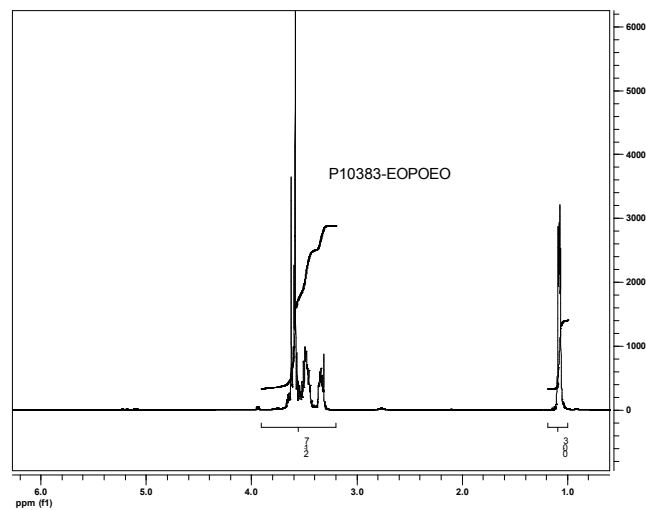
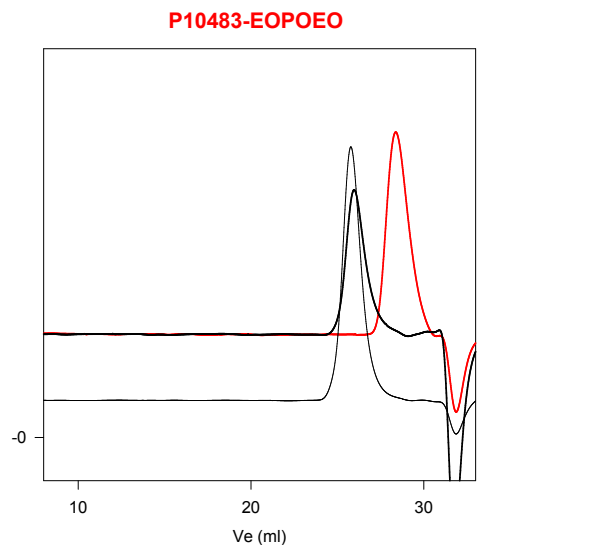
Poly(ethylene oxide-b- propylene oxide -b- ethylene oxide) is prepared by living anionic polymerization with sequence addition of monomer EO and propylene oxide.

**Characterization:**

The molecular weight and polydispersity index of this polymer were determined by size exclusion chromatography (SEC) using a Varian liquid chromatograph equipped with a UV and refractive index detector.

**Solubility:**

Polymer is soluble in THF, CHCl<sub>3</sub>, and toluene.

**First Block PEG****PEG-b-PO diblock****Triblock EOPOEO****SEC of Sample:**

Size exclusion chromatography of the product:

- Poly(ethylene glycol methyleher) : Mn=280, Mw=300, Mw/Mn=1.09
- Poly(ethylene glycol methyleher-b-PO) : Mn=280-1300 Mw/Mn=1.09
- Poly(ethylene glycol methyleher-b-PO-b-EO) : Mn=280-1300-700 Mw/Mn=1.09