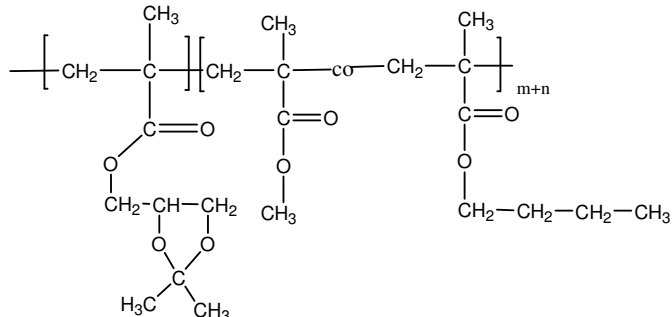


**Poly(Solketal methacrylate-b-Methylmethacrylate –
co-n-butyl methacrylate) random block copolymer**

Structure:



Mn $\times 10^3$ Solketal MA-b- MManBuMAran	PDI
6.0-b-3.0	1.35

MMA:nBuMA	50:50 ratio
-----------	-------------

The polymer was synthesized by GTP process

The polymer was characterized by SEC and ^1H NMR.

Thermal analysis of the samples was carried out on a TA Q100 differential scanning calorimeter at a heating rate of 10°C/min. The midpoint of the slope change of the heat flow plot of the second heating scan was considered as the glass transition temperature (T_g).

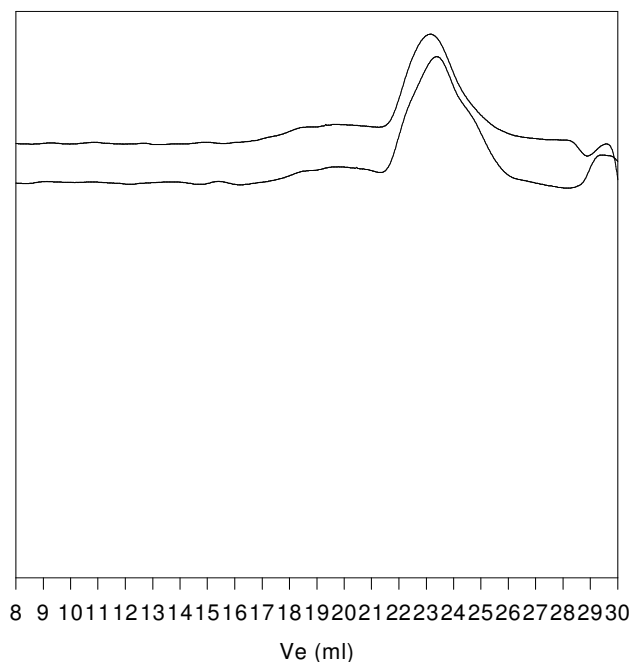
Polymer is soluble in DMF, THF.

P10521A-SolketalMA-b-MMAAnBUMAran

Chemical shift (ppm): 4.256, 4.034, 3.699, 1.375, 1.315

Integration values: 2.10, 2.34, 2.42, 2.14, 13.32, 1.315

P10521A-Solketal MA nBuMAran



Size exclusion chromatography of
1. Solketal MA: Mn 6000 Mw/Mn 1.3
SolketalMA-b-MMA_nBuMaran Mn 6000-b-3000 Mw/Mn: 1.35