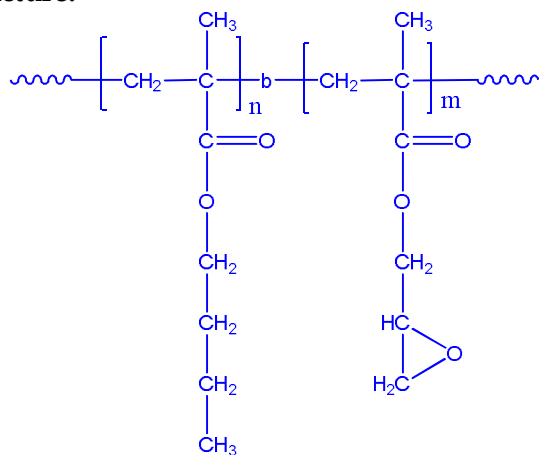


**Sample Name:**

Poly( n-butyl methacrylate-b-glycidyl methacrylate)

**Sample #:** P6811-nBuMAGMA

**Structure:****Composition:**

$M_n \times 10^3$ nBuMA-b-GMA	PDI
12.8-b-7.4	1.24

**Synthesis Procedure:**

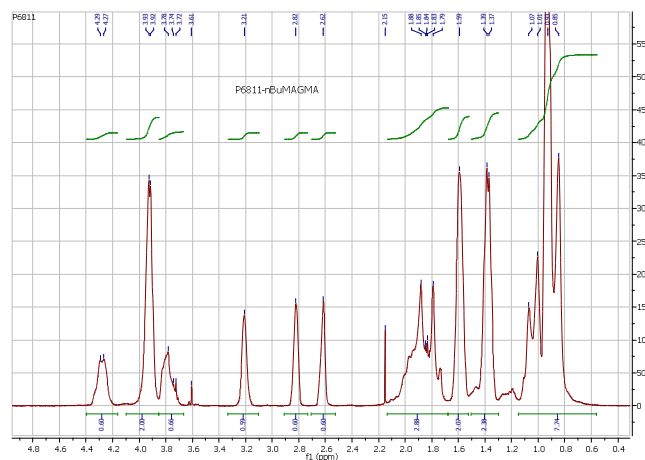
Poly(n-butyl methacrylate -b- glycidyl methacrylate) block copolymer is synthesized by GTP polymerization with sequential addition of n-butyl methacrylate and -glycidyl methacrylate. The obtained polymer was precipitated in methanol.

**Characterization:**

SEC analysis of the obtained block copolymer in THF in presence of triethyl amine as eluent . The final block copolymer composition by  $^1\text{H}$ -NMR spectroscopy in  $\text{CdCl}_2$  Block copolymer PDI is determined by SEC.

**Solubility:**

Polymer is soluble in THF and  $\text{CHCl}_3$ .

 **$^1\text{H}$ -NMR Spectrum of the block copolymer:****SEC of the block copolymer:**