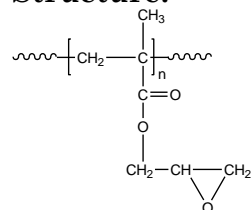


Sample Name: Poly(glycidyl methacrylate)

Sample #: P8452-GMA

Structure:

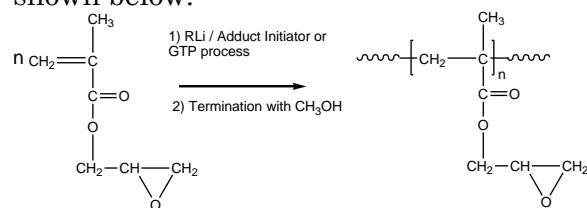


Composition:

Mn × 10 ³	PDI
7.5	1.3
T _g (°C)	58

Synthesis Procedure:

Poly(glycidyl methacrylate) is obtained by living anionic /GTP polymerization of glycidyl methacrylate. The reaction scheme used for the polymer synthesis is shown below:



Characterization:

The molecular weight and polydispersity index (PDI) of poly(glycidyl methacrylate) are obtained by size exclusion chromatography.

Thermal analysis

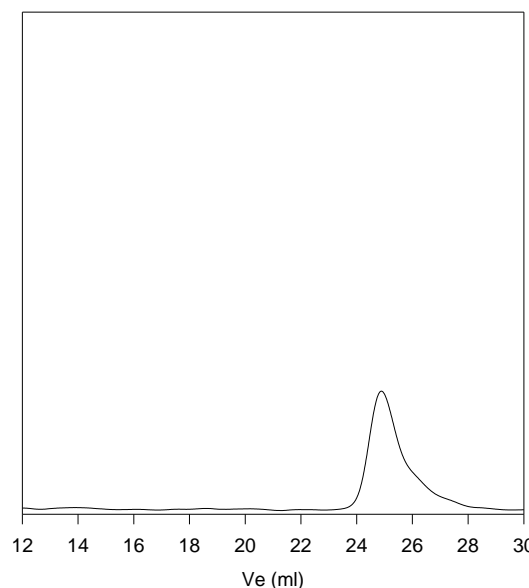
Thermal analysis of the samples was carried out on a TA Q100 differential scanning calorimeter at a heating rate of 10°C/min. The midpoint of the slope change of the heat flow plot of the second heating scan was considered as the glass transition temperature (T_g).

Solubility:

Poly(glycidyl methacrylate) is soluble in THF, CHCl₃, toluene and dioxane. The polymer precipitates from cold methanol and ethanol.

SEC of homopolymer:

P8452-GMA



Size Exclusion Chromatography of Poly(glycidyl methacrylate)
M_n=7500, M_w=9700, PI=1.3

DSC thermogram for the polymer:

